

Validating a Cool Box

A Non-specialist guide

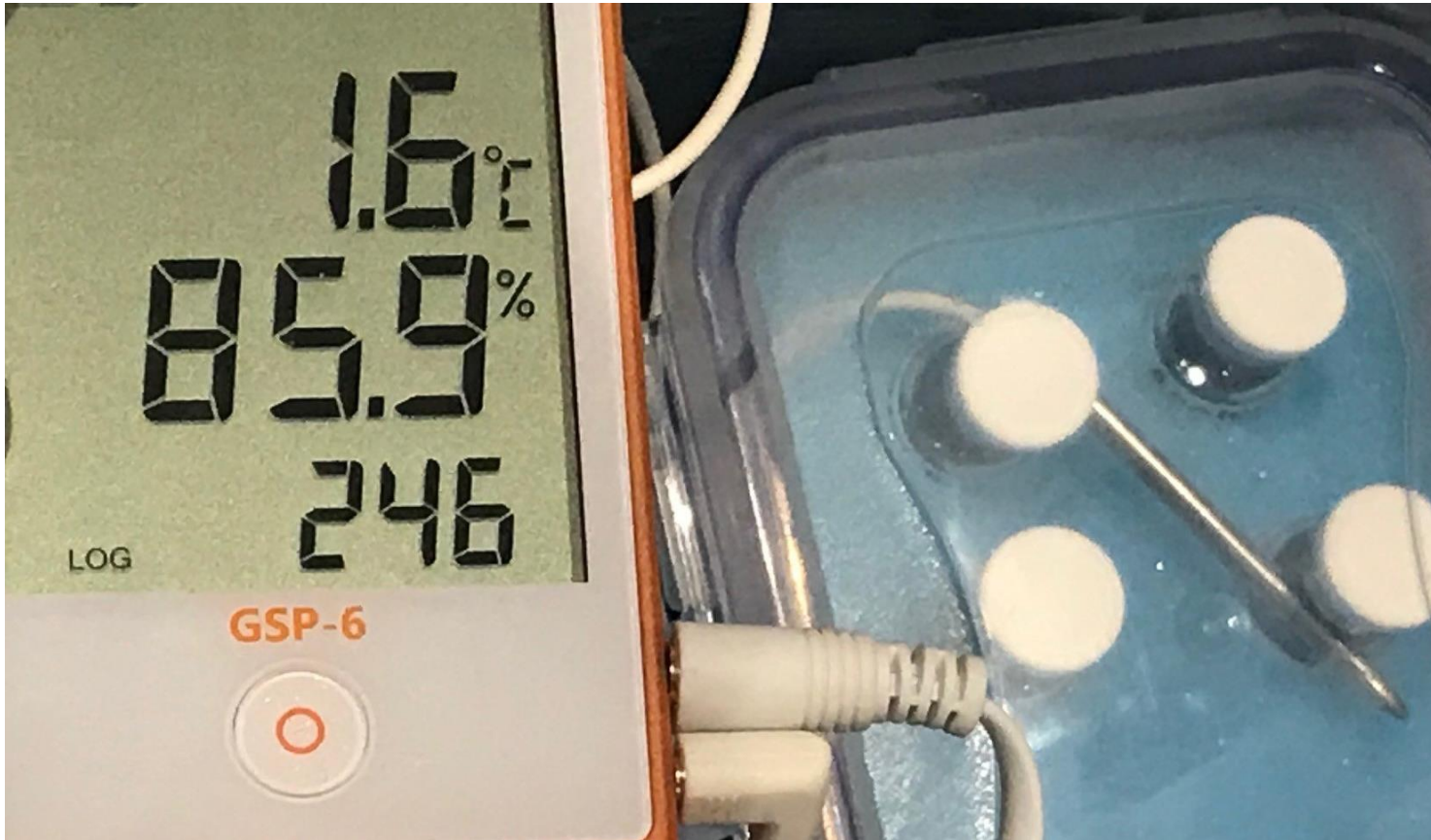
Green Guide Storage distribution and disposal of Vaccines

- Vaccine effectiveness cannot be guaranteed unless the vaccine has been stored correctly
- Domestic Cool Boxes should not be used
- Validated cool boxes and cool packs from a recognised medical supply company



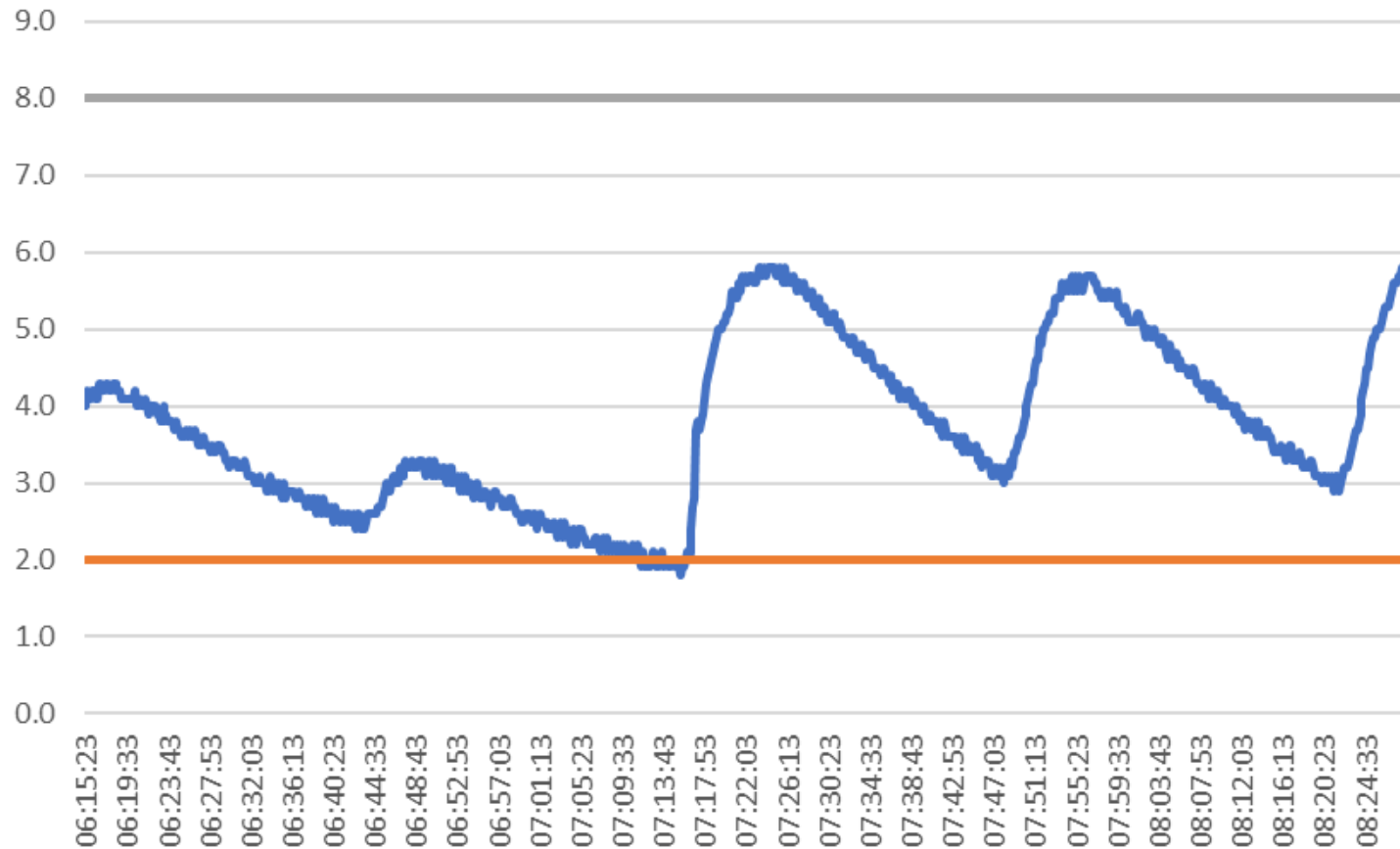
Validate the box by measuring temperature in the way you expect to use it. This needs to occur prior to use with vaccine

Validation confirms the box works how YOU are going to use it.



Using a data logger

- Taking temperature over a period of simulated use, including opening and closing of the cool box a number of times will give you evidence that it does what you need it to
- You will decide how many times you might need to use it depending upon how much vaccine you will be putting in it.
- A data logging device if you have one does this nicely



An example of a validation graph

- The box was used for two and a half hours and opened five times, initially for 1 minute and for then for 3 minutes for the last 3 occasions.
- The cool box stayed within range with temperature being controlled by opening the box for longer.
- It is important to understand your Cool Box and how you intend to use it.